

# CIDETRAK® PP (Puzzle Piece)

M A T I N G   D I S R U P T A N T

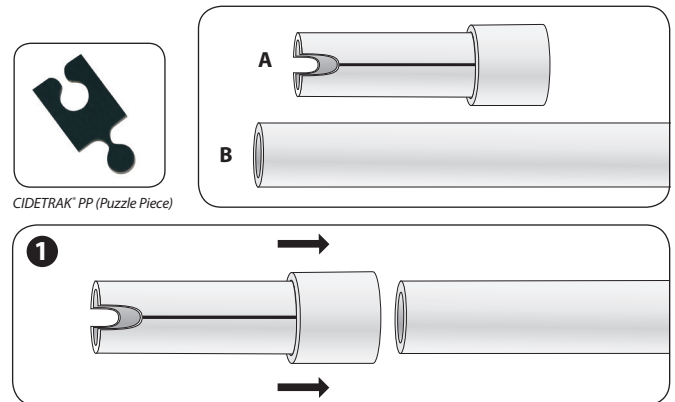
## POLE APPLICATOR ASSEMBLY AND DISPENSER USE INSTRUCTIONS:

### MATERIALS NEEDED:

- A. One PVC applicator tip and union
- B. One 1.22 - 1.52 m long PVC pipe (Schedule 40: 12.7 mm PVC material)

### ASSEMBLY INSTRUCTIONS:

1. Attach notched PVC applicator and union, to end of 1.22 - 1.52 m PVC pipe.



## DISPENSER USE INSTRUCTIONS:

1. Insert dispenser into the top of the PVC applicator and push down.
2. Install dispenser into top of tree. (Illustration of proper height of application.)

### VERY IMPORTANT – PLACEMENT IN THE TREE

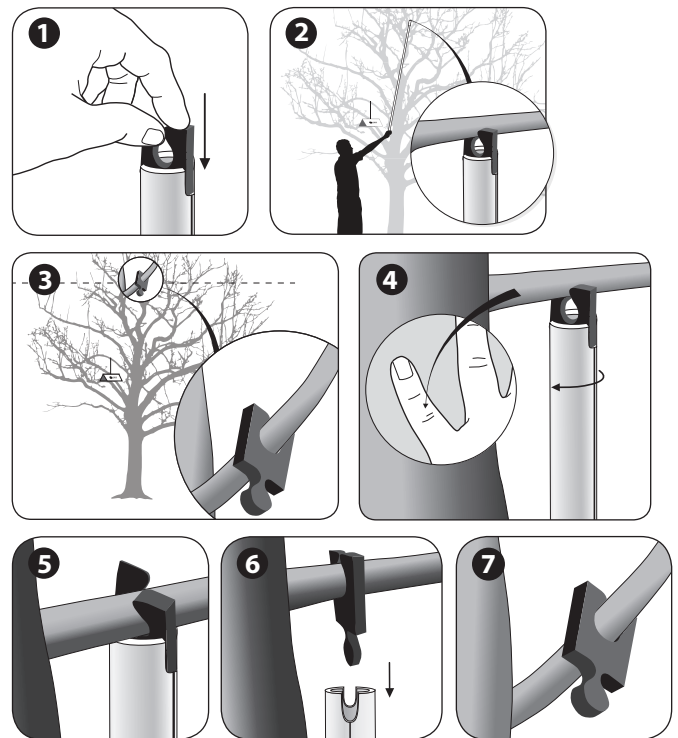
3. To gain optimum effectiveness – place CIDETRAK® in highest part of tree canopy. Best if placed within 12 - 18 inches (30 - 45 cm) from the top of tree.

**NOTE: DO NOT WORRY ABOUT CIDETRAK® EXPOSURE; IT IS DESIGNED FOR THE SUN!**

### VERY IMPORTANT – BRANCH SIZE FOR PLACEMENT –

The branch size should be no smaller than your pinky finger.

4. Touch branch at dispenser center and twist slightly (1/8th or 45° turn) while pushing upward.
5. Dispenser attaches onto branch.
6. Pull PVC applicator straight down to leave dispenser on branch.
7. Dispenser on branch.



## CARRIER PACK ASSEMBLY INSTRUCTIONS:



1. Open CIDETRAK® 4-pack by tearing the zipper around the carrier package to completely separate the two carrier packs.



2. Lift top pack to separate two 2-packs and turn box right side up.



3. Tear open foil dispenser pack at notch.



4. Insert strap into each end-slot or side-slot and secure.